



YINGFAN® GEOSYNTHETIC CLAY LINERS (GCLs)

Professional Manufacturer
Environmental Protection Expert

www.shanghaiyingfan.com



We provide one-stop solutions for geotechnical materials: geotechnical product manufacturing and installation, product R & D, engineering design within the scope of qualification, supply of related products and equipment, and ODM/OEM services.



- ☑ Low permeability
- ☑ High expansibility
- ☑ Self-heal punctures
- ☑ Good hydraulic performance
- ☑ Ease of installation

Advantages



QUALITY CONTROL



We have established, improved and perfected the company's quality control system. Through trial production, the process parameters are optimized. Then, the production, equipment, measurement, quality standards, and operation procedures have been established and improved accordingly, so that the eco-friendly impermeable products are under control. A three-inspection system combining self inspection, mutual inspection and full-time inspection have been established to ensure that no unqualified products leave the factory.

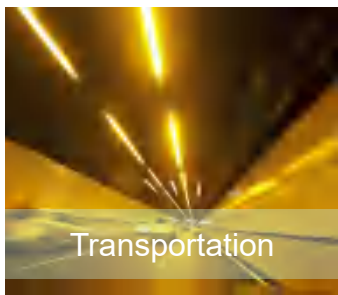
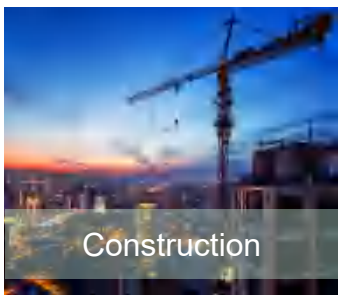
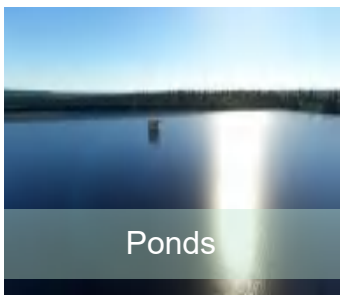
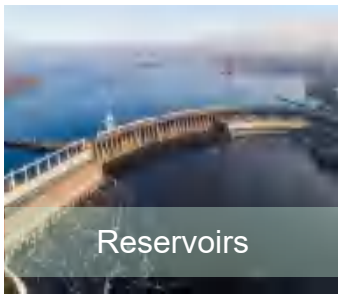
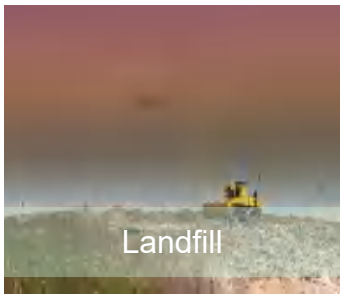
Production

PRODUCTS

Geosynthetic clay liners (GCLs) are factory manufactured hydraulic barriers consisting of a layer of bentonite or other very low-permeability material supported by geotextiles and/or geomembranes, mechanically held together by needling, stitching, or chemical adhesives.

They offer a long lasting resistance to physical and chemical break-down in harsh environments. The GCL liners have very low permeability.

The needle punched geotextile can provide high shear strengths, while the bentonite owns a high affinity for water. So that, the geosynthetic liners can be used for its better hydraulic performance and resistance to varying weather conditions. In addition, GCLs are an environmentally friendly solution and can be installed easily.



APPLICATIONS



geo@shanghaiyingfan.com
whatsapp: +86 191-1722-9923



The information contained herein is, to the best of our knowledge, true and accurate.
There is no implied or expressed warranty.