



# CHEMICAL PEELS MESOPHARM™



# CHEMICAL PEEL PROCEDURE CONSISTS OF SEVERAL IMPORTANT STEPS:

1

Pre-peel  
preparation

2

Peel

3

Neutralization

4

Post-peel  
care



# COLLECTION OF ACTIVE PEELS MESOPHARM PROFESSIONAL

PROFESSIONAL SOLUTIONS FOR SKIN CHEMOEXFOLIATION

The range of non-aggressive peels based on hydroxy acids, pyruvic acid and retinol allows to choose the optimal level of exposure and provides a personalized approach to addressing aesthetic concerns.

## FAST AND EFFECTIVE WAY OF SKIN REJUVENATION WITHOUT LONG RECOVERY PERIOD

- aging skin structure improvement
- microrelief smoothing
- reduction of pigment spots
- acne correction
- regulation of the sebaceous gland activity





CLEANSING FOAM

# FRESH:FOAM

for daily cleansing of oily skin  
and pre-peel preparation of all skin types

Gentle foam contains lactic acid and complex of plant extracts, effectively purifies the skin, removing excess sebum and water-soluble impurities. It enhances natural exfoliation of keratinized scales, brightens and evens out skin tone. Leaves the feeling of freshness and comfort.

- Accelerates the process of cell renewal in the epidermis: lactic acid.
- Ensures long-lasting hydration: allantoin and lactic acid.
- Normalizes sebum production, provides narrowing of pores, delivers anti-inflammatory and anti-microbial effects: complex of plant extracts (sage, thyme, witch hazel, juniper).

**Active ingredients:** soft surfactants based on coconut oil and betaine, lactic acid, complex of centella, juniper, witch hazel, sage and thyme extracts,  $\alpha$ -glucan oligosaccharide, dipotassium glycyrrhizinate, allantoin.

## Directions for use:

1. Remove make-up from the skin before use.
2. Apply to wet skin. Massage gently with circular motions all over the face, including the eye contour area.
3. Rinse thoroughly with water or remove the remains using a wet towel.

To prepare the skin for the chemical peel procedure it is recommended to use the foam daily in the morning and evening for two weeks prior to the scheduled procedure. Can be used as an alternative to or in combination with **EXFOL:ACTIVE CREAM**.



200 mL

# EXFOLIATING CREAM

## EXFOL:ACTIVE CREAM

for pre-peel preparation

Active cream with a glycolic complex for micro-exfoliation and improved skin density. Accelerates cellular renewal, boosts collagen synthesis and refines skin texture. Effectively reduces visible aging signs, including sagging, wrinkles and pigmentation while enhancing skin firmness and elasticity.

Glycolic acid is a hydroxy acid with antioxidant and restructuring properties. Due to its small molecular size, glycolic acid easily penetrates into the dermal layers, where it stimulates the production of extracellular matrix components, provides gentle exfoliation and promotes cell renewal of the epidermis.

The cream prepares the skin for the chemical peel procedure by evening out the stratum corneum thickness to ensure uniform acid penetration.

After the course of use, noticeable whitening is observed, along with evening of skin tone, increased hydration levels and overall improvement in skin condition.

The cream is used as a micropeel treatment for all skin types, especially for patients with fine-wrinkled type of aging.

**Active ingredients:** glycolic complex 12% (pH 3.0–4.0)

**Directions for use:** As pre-peel preparation, apply the cream every evening to clean, dry skin for 1–2 weeks before the chemical peel procedure.

If skin dryness occurs, apply **HYDRO:ACTIVE CREAM** 15 minutes after.

Daily use of sunscreen is strongly recommended to protect the skin from UV damage.



50 mL

GEL PEEL

# FRESH:LACTIC PEEL

superficial moisturizing peel with lactic acid

Lactic acid is a component of the Natural Moisturizing Factor (NMF), providing deep hydration and helping to regulate the water balance of the skin of all types.

Moreover, it stimulates increased ceramide production, particularly ceramide I, in the stratum corneum, thereby strengthening its barrier function.

- Delivers anti-inflammatory action.
- Does not cause photosensitivity, making it suitable for year-round use, including summer months.

**Active ingredients:** lactic acid 20%, arginine (pH 2.0–3.0)

## Indications:

- Dehydrated, dry skin with fine-wrinkled type of aging
- Correction of age-related skin changes
- Photoaging
- Melasma
- Couperosis



30 mL



## PEEL PROCEDURE STEP BY STEP

<b>Cleansing</b>	Apply an adequate amount of <b>FRESH:FOAM</b> to the skin. Gently massage over the whole face, including the periorbital area. Rinse thoroughly with water and dry the skin with paper tissues.
<b>Peel</b>	Apply the product using a fan brush or cotton swabs in the following strict sequence: forehead, temples, side surfaces of the cheeks, neck, decollete, frontal area of the neck, chin, perioral area, nose, periorbital area (1 cm and 0.5 cm from ciliary margin of the upper and lower eyelid, respectively). The exposure time ranges <b>from 3 to 15 minutes</b> , gradually increases with each procedure.
<b>Neutralization</b>	Apply <b>FRESH POST:PEEL LOTION</b> with a brush or cotton pad, leave for 3–5 minutes, then rinse thoroughly with water. Reapply for extra hydration.
<b>Additional step (optional)</b>	<p><b>Serum:</b> apply <b>FRESH:ORANGE SERUM 10%</b> or <b>5%</b> (depending on indications) using a small fan brush. Do not rinse! Allow the product to be fully absorbed.</p> <p><b>Lifting:</b> apply <b>ORANGE:LIFT MASK</b> in a thin layer, leave for 30 minutes until it becomes dry. Carefully peel off the mask upwards from the chin to forehead.</p>
<b>Post-peel</b>	Apply the recovery cream <b>FRESH POST:PEEL CREAM</b> to finish the procedure.

*Recommended course is 4–8 procedures once in 7–14 days*

GEL PEEL

# ALMOND:LIGHT PEEL

lightening regulating peel with mandelic and kojic acids

Mandelic acid-based peel has minimal irritant effect and can be used on thin, sensitive and couperosis-prone skin. It is safe even during periods of active sun exposure since it does not cause photosensitivity.

The peel actively inhibits melanogenesis and reduces the appearance of existing hyperpigmentation. Suitable for all skin types.

Due to the antibacterial and sebo-regulating properties of mandelic acid, the indications include comedone, acne and post-acne treatment.

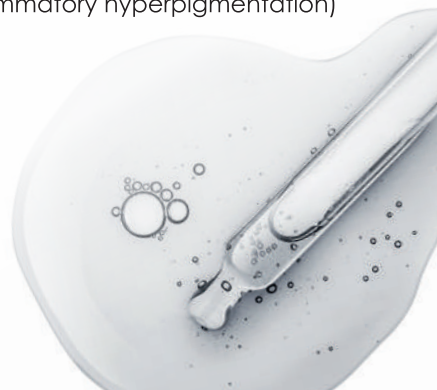
**Active ingredients:** mandelic acid 40%, kojic acid 5% (pH 3.0–4.0)

## Indications:

- Hyperpigmentation (melasma, lentigo, anti-inflammatory hyperpigmentation)
- Correction of age-related skin changes
- Photoaging • Acne



30 mL



## PEEL PROCEDURE STEP BY STEP

<b>Cleansing</b>	Apply an adequate amount of <b>FRESH:FOAM</b> to the skin. Gently massage over the whole face, including the periorbital area. Rinse thoroughly with water and dry the skin with paper tissues.
<b>Peel</b>	Apply the product using a fan brush or cotton swabs in the following strict sequence: forehead, temples, side surfaces of the cheeks, neck, decollete, frontal area of the neck, chin, perioral area, nose, periorbital area (1 cm and 0.5 cm from ciliary margin of the upper and lower eyelid, respectively). The exposure time ranges <b>from 3 to 15 minutes</b> , gradually increases with each procedure.
<b>Neutralization</b>	Apply <b>FRESH POST:PEEL LOTION</b> with a brush or cotton pad, leave for 3–5 minutes, then rinse thoroughly with water. Reapply for extra hydration.
<b>Additional step (optional)</b>	<p><b>Serum:</b> apply <b>FRESH:ORANGE SERUM 10%</b> or <b>5%</b> (depending on indications) using a small fan brush. Do not rinse! Allow the product to be fully absorbed.</p> <p><b>Lifting:</b> apply <b>ORANGE:LIFT MASK</b> in a thin layer, leave for 30 minutes until it becomes dry. Carefully peel off the mask upwards from the chin to forehead.</p>
<b>Post-peel</b>	Apply the recovery cream <b>FRESH POST:PEEL CREAM</b> to finish the procedure.

*Recommended course is 4–8 procedures once in 7–14 days*



GEL PEEL

# FRESH:GLYCO PEEL

restructuring antioxidant peel with glycolic acid

Glycolic acid shows perfect results in anti-age therapy programs. By penetrating deep into the skin layers, it stimulates fibroblast proliferation and activates type I collagen synthesis.

The renewal of the cell structure of the epidermis is accelerated and the brightness of pigment spots is reduced.

Peel smooths the skin microrelief, creating lifting effect.

**Active ingredients:** glycolic acid 20% (pH 1.0–3.0)

## Indications:

- Correction of age-related skin changes
- Photoaging
- Hyperpigmentation
- Hyperkeratosis



30 mL



## PEEL PROCEDURE STEP BY STEP

<b>Cleansing</b>	Apply an adequate amount of <b>FRESH:FOAM</b> to the skin. Gently massage over the whole face, including the periorbital area. Rinse thoroughly with water and dry the skin with paper tissues.
<b>Peel</b>	Apply the product using a fan brush or cotton swabs in the following strict sequence: forehead, temples, side surfaces of the cheeks, neck, decollete, frontal area of the neck, chin, perioral area, nose, periorbital area (1 cm and 0.5 cm from ciliary margin of the upper and lower eyelid, respectively). The exposure time ranges <b>from 3 to 15 minutes</b> , gradually increases with each procedure.
<b>Neutralization</b>	Apply <b>FRESH POST:PEEL LOTION</b> with a brush or cotton pad, leave for 3–5 minutes, then rinse thoroughly with water. Reapply for extra hydration.
<b>Additional step (optional)</b>	<p><b>Serum:</b> apply <b>FRESH:ORANGE SERUM 10%</b> or <b>5%</b> (depending on indications) using a small fan brush. Do not rinse! Allow the product to be fully absorbed.</p> <p><b>Lifting:</b> apply <b>ORANGE:LIFT MASK</b> in a thin layer, leave for 30 minutes until it becomes dry. Carefully peel off the mask upwards from the chin to forehead.</p>
<b>Post-peel</b>	Apply the recovery cream <b>FRESH POST:PEEL CREAM</b> to finish the procedure.

*Recommended course is 4–8 procedures once in 7–14 days*

GEL PEEL

# FRESH:GLYCOLACTIC PEEL

anti-aging remodeling moisturizing peel

The combination of two acids delivers dual action: activating cellular renewal and enhancing epidermal hydration levels.

The synergy of glycolic acid and lactic acid boosts the peel's efficacy. Due to this synergistic formula, the peel is particularly used in rejuvenation protocols and recommended for patients with aging dry skin.

**Active ingredients:** glycolic acid 20%, lactic acid 20%, arginine (pH 1.0–3.0)

## Indications:

- Dull lifeless skin
- Photoaging
- Prevention and correction of age-related changes



30 mL



## PEEL PROCEDURE STEP BY STEP

<b>Cleansing</b>	Apply an adequate amount of <b>FRESH:FOAM</b> to the skin. Gently massage over the whole face, including the periorbital area. Rinse thoroughly with water and dry the skin with paper tissues.
<b>Peel</b>	Apply the product using a fan brush or cotton swabs in the following strict sequence: forehead, temples, side surfaces of the cheeks, neck, decollete, frontal area of the neck, chin, perioral area, nose, periorbital area (1 cm and 0.5 cm from ciliary margin of the upper and lower eyelid, respectively). The exposure time ranges <b>from 4 to 12 minutes</b> , gradually increases with each procedure.
<b>Neutralization</b>	Apply <b>FRESH POST:PEEL LOTION</b> with a brush or cotton pad, leave for 3–5 minutes, then rinse thoroughly with water. Reapply for extra hydration.
<b>Additional step (optional)</b>	<p><b>Serum:</b> apply <b>FRESH:ORANGE SERUM 10%</b> or <b>5%</b> (depending on indications) using a small fan brush. Do not rinse! Allow the product to be fully absorbed.</p> <p><b>Lifting:</b> apply <b>ORANGE:LIFT MASK</b> in a thin layer, leave for 30 minutes until it becomes dry. Carefully peel off the mask upwards from the chin to forehead.</p>
<b>Post-peel</b>	Apply the recovery cream <b>FRESH POST:PEEL CREAM</b> to finish the procedure.

*Recommended course is 4–8 procedures once in 7–14 days*

GEL PEEL

# MULTI:COMPLEX PEEL

seboregulating anti-inflammatory peel

The multi-acid peel has keratolytic, sebostatic and antiseptic properties. Characterized by relatively high lipophilicity, it induces epidermal exfoliation at the hair follicle orifice, thereby preventing comedone formation.

Salicylic acid combined with pyruvic acid regulates sebum production and inhibits 5 $\alpha$ -reductase in sebocytes, while lactic acid enhances skin hydration.

The combined action of three acids provides comprehensive improvement for problem skin: reducing inflammation, smoothing skin texture and diminishing the appearance of atrophic post-acne scars.

The peel helps to strengthen and improve the structure of mature skin, reduces the number and depth of wrinkles, evens out skin tone and lightens pigmentation spots.

**Active ingredients:** salicylic acid 20%, pyruvic acid 8%, lactic acid 10% (pH 1.5)

## Indications:

- Seborrhea
- Acne and post-acne scars
- Skin microrelief disturbance
- Hyperpigmentation
- Photoaging
- Correction of age-related skin changes



30 mL



## PEEL PROCEDURE STEP BY STEP

Cleansing	Apply an adequate amount of <b>FRESH:FOAM</b> to the skin. Gently massage over the whole face, including the periorbital area. Rinse thoroughly with water and dry the skin with paper tissues.
Peel	Apply the product using a fan brush or cotton swabs in the following strict sequence: forehead, temples, side surfaces of the cheeks, neck, decollete, frontal area of the neck, chin, perioral area, nose, periorbital area (1 cm and 0.5 cm from ciliary margin of the upper and lower eyelid, respectively). The exposure time ranges <b>from 1 to 3 minutes</b> . Leave on the skin until a white precipitate forms on the surface due to the crystallization of salicylic acid.
Neutralization	<b>Rinsing the peel with water is strongly discouraged!</b> Apply <b>FRESH POST:PEEL LOTION</b> with a brush or cotton pad, leave for 5 minutes, then rinse thoroughly with water. Reapply for extra hydration.
Post-peel	Apply the recovery cream <b>FRESH POST:PEEL CREAM</b> to finish the procedure.

*Recommended course is 4–6 procedures once in 7–14 days*



LOTION PEEL

# FRESH:ORANGE PEEL 25%

multi-purpose restructuring antioxidant peel



30 mL

The pyruvic acid-based peel evens out skin texture and tone, reduces the number of comedones and inflammatory lesions.

The hydrophilic and lipophilic properties of pyruvic acid allow it to penetrate the skin quickly and evenly, making this peel suitable for all skin types.

In the superficial layers of the epidermis, pyruvic acid is hydrolyzed into lactic acid and carbon dioxide, providing additional hydration. It has the ability to inhibit 5 $\alpha$ -reductase, exerting restructuring, keratolytic, antimicrobial and sebostatic effects.

Pyruvic acid reduces the visibility of age-related changes, including those caused by prolonged sun exposure.

It activates the skin's natural regenerative processes, evens out skin texture and improves the complexion.

The peel contains wild orange extract, enriched with a complex of vitamins and bioflavonoids, which provides immediate antioxidant and revitalizing effects during the treatment.

**Active ingredients:** pyruvic acid 25%, bitter orange extract (pH 1.3–1.5)

## Indications:

- Aging prevention
- Photoaging
- Hyperpigmentation
- Acne, seborrhea
- Hyperkeratosis



## PEEL PROCEDURE STEP BY STEP

Cleansing	Apply an adequate amount of <b>FRESH:FOAM</b> to the skin. Gently massage over the whole face, including the periorbital area. Rinse thoroughly with water and dry the skin with paper tissues.
Peel	Apply the product rapidly using a fan brush or cotton swabs in the following strict sequence: forehead, temples, side surfaces of the cheeks, neck, decollete, frontal area of the neck, chin, perioral area, nose, periorbital area (1 cm and 0.5 cm from ciliary margin of the upper and lower eyelid, respectively). The exposure time ranges <b>from 30 seconds to 5–7 minutes</b> , gradually increases by 30–40 seconds with each procedure.
Neutralization	Use cold or thermal water, then dry the skin with a soft paper tissue. After neutralization, examine the skin for the degree and area of erythema and edema. In subsequent procedures, the areas with the most pronounced erythema should be treated last.
Additional step (optional)	<b>Serum:</b> apply <b>FRESH:ORANGE SERUM 10%</b> or <b>5%</b> (depending on indications) using a small fan brush. Do not rinse! Allow the product to be fully absorbed. <b>Lifting:</b> apply <b>ORANGE:LIFT MASK</b> in a thin layer, leave for 30 minutes until it becomes dry. Carefully peel off the mask upwards from the chin to forehead.
Post-peel	Apply the recovery cream <b>FRESH POST:PEEL CREAM</b> to finish the procedure.

*Recommended course is 5–7 procedures once in 7–14 days twice a year*

LOTION PEEL

# MANDELIC PEEL

rejuvenating lifting peel with pronounced whitening effect

Mandelic acid blocks tyrosinase activity, slows down the appearance of pigment spots. Moreover, it has sebostatic and soft bacteriostatic effect, normalizes sebum production, promotes narrowing of pores and reduces acne or post-acne signs.

Dipotassium glycyrrhizinate, derived from licorice root extract, exhibits pronounced anti-inflammatory properties, inhibits melanocyte activity and works synergistically with  $\alpha$ -hydroxy acids.

DMAE in the peel composition delivers intense hydration, stimulates cellular renewal, prevents lipofuscin accumulation in cells and helps to reduce pigment spots. It also minimizes traces of glycation in the skin.

Niacinamide (vitamin B3) prevents melanosome transfer to keratinocytes, improves tissue nutrition by enhancing microcirculation and reduces inflammation.

**Active ingredients:** mandelic acid 45%, dipotassium glycyrrhizinate, DMAE, niacinamide (pH 3.0)

## Indications:

- Skin with decreased turgor and signs of photoaging
- UV-induced hyperpigmentation
- Acne and post-acne



30 mL



## PEEL PROCEDURE STEP BY STEP

<b>Cleansing</b>	Apply an adequate amount of <b>FRESH:FOAM</b> to the skin. Gently massage over the whole face, including the periorbital area. Rinse thoroughly with water and dry the skin with paper tissues.
<b>Peel</b>	Apply the product using a fan brush or cotton swabs in the following strict sequence: forehead, temples, side surfaces of the cheeks, neck, decollete, frontal area of the neck, chin, perioral area, nose, periorbital area (1 cm and 0.5 cm from ciliary margin of the upper and lower eyelid, respectively). The exposure time ranges <b>from 3 to 15–20 minutes</b> , gradually increases with each procedure.
<b>Neutralization</b>	Remove with cold water! Restore the pH balance of the skin with <b>FRESH POST:PEEL LOTION</b> .
<b>Post-peel</b>	Apply the recovery cream <b>FRESH POST:PEEL CREAM</b> to finish the procedure.

*Recommended course is 4–8 procedures once in 7–14 days twice a year*

LOTION PEEL

# FERULIC PEEL

soft renewing peel with antioxidant and vessel-strengthening effect

Ferulic acid offers a broad spectrum of benefits. This anti-inflammatory, antibacterial and antioxidant ingredient works synergistically with AHA-complex (citric, lactic and mandelic acids) to gently promote skin renewal and stimulate natural ceramide synthesis. It helps to restore optimal hydration levels, improve skin texture, regulate sebum production.

Tranexamic acid is a well-known antioxidant that inhibits lipid peroxidation and mitigates the skin's pro-inflammatory response to other acids in the formulation. It provides immediate skin brightening, delivering an even and radiant complexion after treatment.

Vitamin K strengthens the vessel walls and decreases puffiness of the tissues.

**Active ingredients:** ferulic acid 7%, citric acid 6%, lactic acid 6%, mandelic acid 4%, tranexamic acid 1%, vitamin K (pH 3.25)

## Indications:

- Atonic skin with signs of photoaging and chronoaging
- Hyperpigmentation
- Acne and post-acne
- Sensitive skin with microcirculation problems
- Oily seborrhea of the scalp
- Stressed skin
- Dry skin with signs of flaking



30 mL



## PEEL PROCEDURE STEP BY STEP

<b>Cleansing</b>	Apply an adequate amount of <b>FRESH:FOAM</b> to the skin. Gently massage over the whole face, including the periorbital area. Rinse thoroughly with water and dry the skin with paper tissues.
<b>Peel</b>	Apply the product using a fan brush or cotton swabs in the following strict sequence: forehead, temples, side surfaces of the cheeks, neck, decollete, frontal area of the neck, chin, perioral area, nose, periorbital area (1 cm and 0.5 cm from ciliary margin of the upper and lower eyelid, respectively). The exposure time ranges <b>from 3 to 15–20 minutes</b> , gradually increases with each procedure. In case of application to the scalp, leave the peel for 6–8 hours.
<b>Neutralization</b>	Remove with cold water! Restore the pH balance of the skin with <b>FRESH POST:PEEL LOTION</b> .
<b>Post-peel</b>	Apply the recovery cream <b>FRESH POST:PEEL CREAM</b> to finish the procedure.

*Recommended course is 4–8 procedures once in 7–14 days twice a year*



LOTION PEEL

# AZELAIC PEEL

peel with pronounced anti-inflammatory and whitening effect

Azelaic acid exhibits sebostatic, anti-inflammatory and keratolytic properties. It reduces the ability of bacteria to develop resistance to antibiotics.

Non-habit forming, helps to address oily skin concerns comprehensively.

Dipotassium glycyrrhizinate, derived from licorice root, has pronounced anti-inflammatory effects, blocks melanocyte activity and works synergistically with other product ingredients.

Low-concentration salicylic acid acts as a gentle keratolytic agent without causing skin irritation while restoring smooth texture.

Arnica extract is famous for its anti-inflammatory, antibacterial and antioxidant properties.

**Active ingredients:** azelaic acid 20%, salicylic acid 2%, arnica flowers extract, lactic acid 3%, dipotassium glycyrrhizinate (pH 3.0–4.0)

## Indications:

- Oily, prone to acne, wide pores and comedones
- Folliculitis
- Rosacea (erythematotelangiectatic type)
- Post-traumatic pigmentation (post-acne, etc.)



30 mL



## PEEL PROCEDURE STEP BY STEP

Cleansing	Apply an adequate amount of <b>FRESH:FOAM</b> to the skin. Gently massage over the whole face, including the periorbital area. Rinse thoroughly with water and dry the skin with paper tissues.
Peel	Apply the product using a fan brush or cotton swabs in the following strict sequence: forehead, temples, side surfaces of the cheeks, neck, decollete, frontal area of the neck, chin, perioral area, nose, periorbital area (1 cm and 0.5 cm from ciliary margin of the upper and lower eyelid, respectively). The exposure time ranges <b>from 3 to 15–20 minutes</b> , gradually increases with each procedure.
Neutralization	Remove with cold water! Restore the pH balance of the skin with <b>FRESH POST:PEEL LOTION</b> .
Post-peel	Apply the recovery cream <b>FRESH POST:PEEL CREAM</b> to finish the procedure.

*Recommended course is 4–8 procedures once in 7–14 days twice a year*

NEUTRALIZING LOTION

# FRESH POST:PEEL LOTION

pH balance restoration

**FRESH POST:PEEL LOTION** is a gentle solution that effectively neutralizes residual acids after peel while maintaining the skin's natural pH balance. This lightweight lotion is also ideal for at-home post-peel care, providing essential hydration to support skin recovery.

The active complex contains a chitosan derivative which gently neutralizes excess skin acidity while accelerating the restoration of the skin's natural physiological state. This helps to rebalance pH levels to the optimal 5–5.5 range.

The lotion accelerates epidermal regeneration while delivering soothing and hydration to the skin stressed by chemical peel.

**Active ingredients:** betaine, complex of NMF components, chitosan derivative (pH 5.0)

**Directions for use:** to neutralize the peel, apply the lotion evenly onto the treated area using cotton pads or a brush, avoiding rubbing. Leave it for 5 minutes, then rinse thoroughly with water.

! If the patient still feels a burning sensation in some areas, rinse the skin again and reapply **FRESH POST:PEEL LOTION**.

For home use, gently spread the lotion over the skin with cotton pads or a brush without rubbing and do not rinse it off.



250 mL

LIFTING PEEL-OFF MASK

# ORANGE:LIFT MASK

for completing the peel procedure

An effective rejuvenating treatment that delivers exfoliation and lifting. The formula with microencapsulated retinol provides antioxidant benefits while smoothing wrinkles and removing dead skin cells. This soothing treatment helps to restore healthy radiance of the skin.

- Microencapsulated retinol stimulates cellular renewal and enhances local skin immunity.
- Hyaluronic acid, amino acids and natural moisturizing factors work synergistically to improve skin turgor, smooth fine lines and enhance hydration.
- Flax seed extract provides deep hydration while helping to firm and contour facial features.

**Active ingredients:** complex of NMF components, hyaluronic acid, flax seed extract, microencapsulated retinol (in actosomes).

**Directions for use:** apply the mask in a thin layer, leave for 30 minutes until it becomes dry. Carefully peel off the mask upwards from the chin to forehead.



15 and 50 mL

# REJUVENATING SERUMS

for anti-age treatment

Light anti-age serums with microencapsulated retinol help to prevent and slow down aging while regulating skin cell metabolism.

- The serum's key active ingredient is retinol (vitamin A) encapsulated in actosomes. Currently, retinol remains the only vitamin component with clinically proven anti-aging efficacy. By accelerating the skin's natural epidermal renewal process, retinol helps to achieve smoother, more radiant complexion.
- Vitamin C – a powerful anti-age ingredient that protects cell membranes from free radical damage.
- Tocopherol (vitamin E) restores cell nutrition, prevents skin dehydration by maintaining the hydrolipid balance, soothes irritation and flaking, acts as an active antioxidant and protects cells from ultraviolet damage.

**Active ingredients:** microencapsulated retinol (in actosomes), betaine, vitamin C, vitamin E, magnolia bark extract.



# FRESH:ORANGE SERUM 10% & FRESH:ORANGE SERUM 5%

## For professional use

- As an express treatment for breakouts: apply once prior to **ORANGE:LIFT MASK**.
- As part of a chemical peel procedure. When used in a course, apply no more than once a week.
- For targeted application on inflammatory elements after facial treatments or acne-focused skincare procedures.
- For home use – spot treatment for particularly stubborn, severe breakouts (only under professional supervision).
- As the final step of anti-age programs to stimulate neocollagenesis, hydration and skin lifting.

## For home use

- As one of the stages of a chemical peel procedure.
- For evening application as a rejuvenating treatment between courses of superficial peels.
- To stimulate cell renewal, improve skin tone and turgor, use in courses of 4–6 months as a night serum on face, neck, décolleté and hands.



30 mL



RECOVERING CREAM

# FRESH POST:PEEL CREAM

for dry and very dry skin, skin after peels and other aggressive exposures

The lamellar emulsion cream is designed for skin recovery after chemical peels, dermabrasion and laser treatments. It is also suitable for skin with damaged hydrolipid mantle. Due to its structural and chemical similarity to skin lipids, the lamellar emulsion easily integrates into disrupted layers of the epidermis, reducing visible flaking. The gentle cream spreads effortlessly on the skin, effectively alleviating sensations of dryness and tightness.

- NMF (Natural Moisturizing Factor) components restore the skin's natural hydration.
- Mimosa extract provides astringent, antiseptic and toning effects.
- Hyaluronic acid and fermented grape seed oil enhance elasticity, promote regeneration, possess pronounced anti-inflammatory and soothing properties and protect against harmful environmental factors.

**Active ingredients:** urea, squalane, mimosa bark extract, complex of NMF components, pumpkin seed extract, sea water, polysaccharide complex with  $\alpha$ -glucan oligosaccharide, complex of ceramides, phytosphingosine and cholesterol, fermented grape seed oil, hyaluronic acid.

**Directions for use:** apply to the skin immediately after the chemical peel procedure, massage gently with circular motions until full absorption. Use 2–3 times per day (or more frequently if skin tightness occurs) for 3 days following the procedure.

Use as a day cream for skin with pronounced flaking.



50 and 150 mL

<b>Pre-peel preparation</b>	<b>FRESH:FOAM EXFOL:ACTIVE CREAM</b>
<b>Peels</b>	<b>FRESH:LACTIC PEEL ALMOND:LIGHT PEEL FRESH:GLYCO PEEL FRESH:GLYCOLACTIC PEEL MULTI: COMPLEX PEEL FRESH:ORANGE PEEL 25% MANDELIC PEEL FERULIC PEEL AZELAIC PEEL</b>
<b>Neutralization</b>	<b>FRESH POST:PEEL LOTION</b>
<b>Post-peel care</b>	<b>FRESH:ORANGE SERUM 10% &amp; FRESH:ORANGE SERUM 5% ORANGE:LIFT MASK FRESH POST:PEEL CREAM</b>





# Mesopharm



## **MOSCOW**

Business Center "Barclay Plaza",  
Barclay st., 6/5, office 501  
Tel.: +7 (495) 663-23-45, +7 (985) 627-08-82



## **SAMARA**

Dachnaya st., 15  
Tel.: +7 (846) 313-26-43



## **SAINT-PETERSBURG**

Yakubovicha st., 24  
Tel.: +7 (812) 640-23-45, +7 (812) 777-05-81



## **UFA**

Bakalinskaya st., 4  
Tel.: +7 (925) 448-89-31



## **VOLGOGRAD**

Business Center "Mercury",  
Kalinina st., 13, office 6  
Tel.: +7 (8442) 78-18-44, +7 (905) 395-67-25



## **MINSK**

Business Center A1,  
Internatsionalnaya st., 36-1, office 823  
Tel.: +375-29863-36-40



## **EKATERINBURG**

Business Center "Summit",  
8 Marta st., 51, office 701  
Tel.: +7 (343) 289-00-70



## **ASTANA**

Microdistrict AK-BULAK 2, Sarykengir lane, 1,  
non-residential premises 7B  
Tel.: +7 (701) 541-17-61, +7 (701) 541-16-91



## **KALININGRAD**

Business Center "Na Ostrove",  
Oktyabrskaya st., 8, floor 5, office 509  
Tel.: +7 (4012) 65-84-88



## **NOVOSIBIRSK**

Business Center "CityCenter",  
Deputatskaya st., 46, entrance 1,  
floor 14, office 1142  
Tel.: +7 (383) 399-15-40